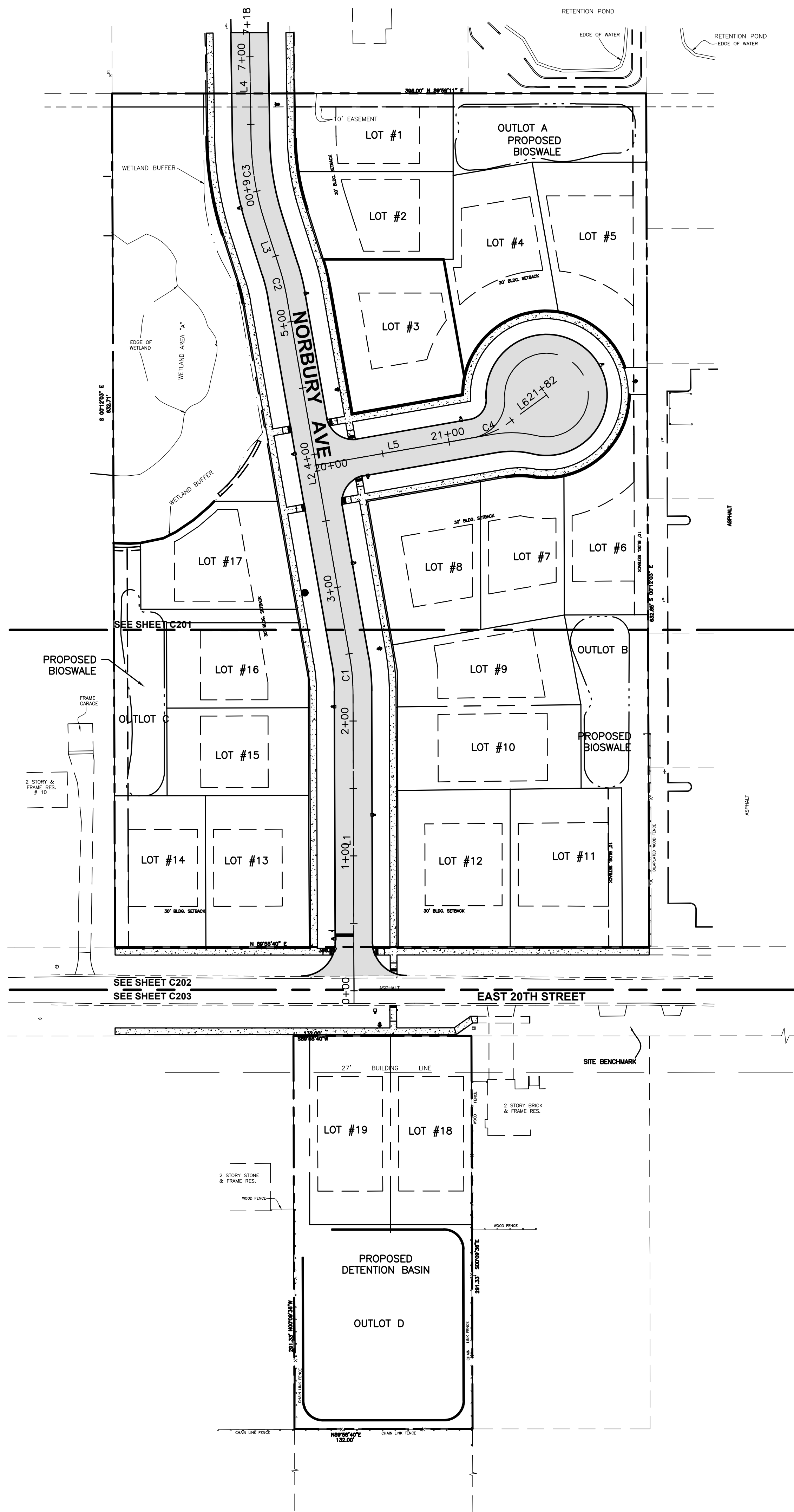


Layout Tab Name: C200 OVERALL SITE PLAN, Images: lombard aerial.jpg; . Xrefs: 080220-X.dwg; 080220-DIGI.dwg; 2017surveyv4\_2d.dwg; 080220-P.dwg; 080220-TBLK.dwg; 2017surveyv4\_2d.dwg; 080220-P.dwg; 080220-TBLK.dwg  
 Last Saved By: Brammeier, 12/20/2021 2:11:48 PM  
 \\ad88ac1\All-Shares\srvin\DE\Chicago\Clients\United Home Builders\080220-Norbury\_Crossing-Lombard\_IL\4.0 Disciplines\Civil\Cadd\Cad\080220-C200-SIT.dwg Plotted By: Brammeier, Zach Plotted: December 21, 2021, 2:41:36 PM



### SITE LEGEND

- INDICATES RESIDENTIAL DRIVEWAY PAVEMENT—SEE DETAILS FOR PAVEMENT COMPOSITION
- INDICATES RESIDENTIAL STREET PAVEMENT—SEE DETAILS FOR PAVEMENT COMPOSITION
- INDICATES NEW CONCRETE PAVEMENT/SIDEWALK—SEE DETAILS FOR PAVEMENT COMPOSITION
- LIGHT POLES
- EXISTING CURB AND GUTTER
- POSITIVE SLOPED CURB
- PROPERTY BOUNDARY

### CURVE TABLE

NUMBER	RADIUS	LENGTH	DELTA	PI STATION	PC STATION	PT STATION
C1	135.00	22.95	9° 44' 22"	2+33.81	2+22.31	2+45.26
C2	142.00	19.45	7° 50' 47"	5+29.50	5+19.76	5+39.21
C3	208.00	61.44	16° 55' 32"	6+08.30	5+77.35	6+38.80
C4	60.02	28.30	27° 00' 39"	21+32.49	21+18.08	21+46.37

### LINE TABLE

NUMBER	LENGTH	BEARING	START STATION	END STATION
L1	222.31	N0° 11' 26.23"W	0+00.00	2+22.31
L2	274.50	N9° 55' 48.66"W	2+45.26	5+19.76
L3	38.15	N17° 46' 39.33"W	5+39.21	5+77.35
L4	79.07	N0° 51' 06.94"W	6+38.80	7+17.87
L5	118.08	N80° 04' 25.64"E	20+00.00	21+18.08
L6	35.42	N53° 52' 28.53"E	21+46.37	21+81.79

### LOT INFORMATION

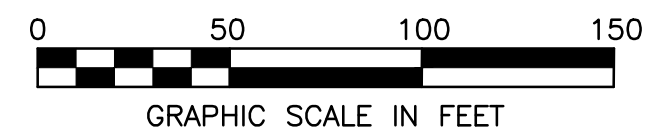
LOT NUMBER	LOT SIZE	LOT WIDTH
1*	6,766 SF	58 FT
2	6,906 SF	65 FT
3	9,373 SF	86.4 FT
4	8,317 SF	68 FT
5	9,637 SF	70.8 FT
6	7,923 SF	61.9 FT
7	6,644 SF	62 FT
8	8,157 SF	74.4 FT
9*	7,444 SF	51.3 FT
10	8,432 SF	62 FT
11	9,716 SF	82.8 FT
12	9,686 SF	83.1 FT
13	8,606 SF	76.6 FT
14	7,546 SF	67.3 FT
15	6,824 SF	65 FT
16	6,477 SF	63 FT
17	7,592 SF	68.8 FT
18	8,426 SF	60 FT
19	8,397 SF	60 FT

\*- INDICATES A VARIANCE IS NEEDED FOR THE REQUIRED LOT WIDTH  
 NOTE:  
 LOT WIDTHS WERE MEASURED PER THE DEFINITION IN VILLAGE CODE SEC. 155.802

### BENCHMARK:

THE BASIS OF ELEVATIONS HEREON IS NAVD88 - FIRE HYDRANT BOLT  
 SEE DRAWING FOR LOCATION.  
 ELEVATION = 776.43

THE EXISTING CONDITIONS SHOWN ARE BASED UPON A SURVEY PREPARED BY GENTILE AND ASSOCIATES AND DATED FEBRUARY 3, 2017.



No.	DATE	REVISION

PROJECT No: 080220  
 DATE: 01/17/20  
 DES. JL  
 DR. DH  
 CKD. JG

1815 South Meyers Road  
 Suite 950  
 Oakbrook Terrace, IL 60181  
 630.424.9080  
 FAX: 630.485.3731

**WOOLPERT**  
 ARCHITECTURAL ENGINEERING (CORPORATE)

**SITE IMPROVEMENT PLANS**  
**NORBURY CROSSINGS**  
 20TH STREET BETWEEN MAIN ST. AND HIGHLAND AVE.  
 LOMBARD, DUPAGE COUNTY, ILLINOIS

**OVERALL SITE PLAN**

SHEET NO.  
**C200**